

VIY5-1500

Ground Penetrating Radar

User friendly and low cost system for diverse application. VIY®5-1500 is suitable for inspection concrete other structures.

With VIY®5-1500, you can quickly detect position and depth of metallic and non-metallic objects:

- metal utilities, including pipes and cables
- non-metallic pipes, including PVC and asbestos cement ones
- positions of rebars
- moisture zones
- subsurface objects (voids, cracks, heterogeneous inclusions)

VI45-1500 GPR



Wide Operation Possibilities

- Simplified interface for basic applications
- Wide range of abilities in standard interface



Connections

- USB connections
- Standard extender can be used



No Need Battery

- Powered from computer's USB port



GPR Antenna

- Shield antenna systems
- Exchangeable bottom protector
- Original "Telbin" technology
- Built-in tilt sensors
- Robust fiberglass body
- Low power consumption
- Powered from computer USB port



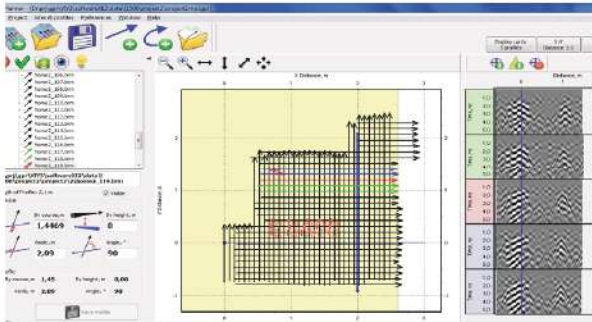
Any Windows Computer

- Any Windows-based computer is applicable
- The antenna directly connects to PC

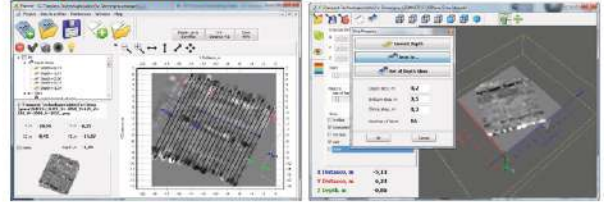


VI45-1500 GPR

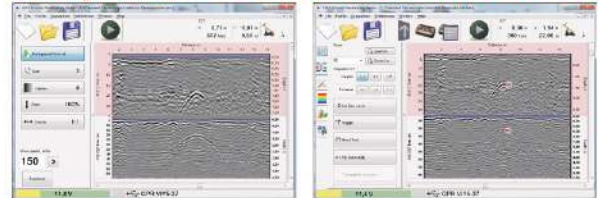
Arbitrary Positions of GPR Profiles in Project



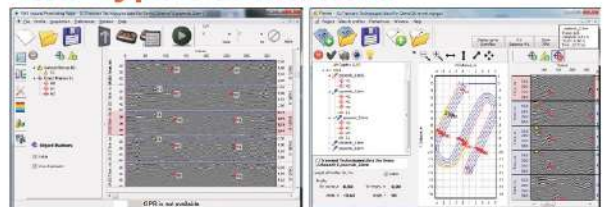
Depth Slices



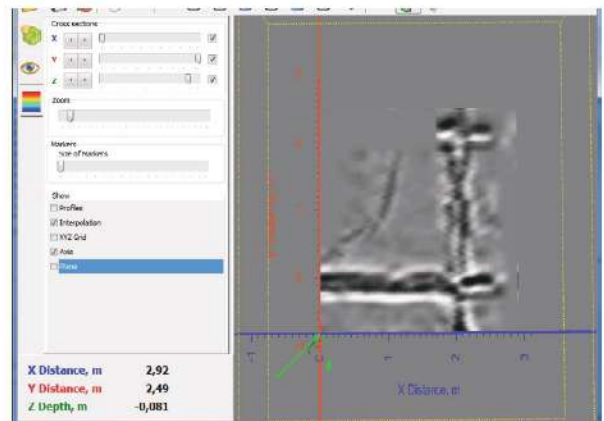
Simplified or Advanced Interface



Two Types of Markers



3D Visualization





VIY[®]5-1500 Specifications

Antenna frequency	1500 MHz
Survey window	8, 12, 16, 20 ns
Depth of sounding up to (determined by soil properties)	0,5 m
Spatial resolution (better than)	0,03 m
Trigger mode	single, internal, external
Dimensions of antenna, L x W x H	190 x 140 x 40 mm
Weight of antenna	0,6 kg
Operating temperature range	-20°C to +40°C
Operation time	limited only working time of the laptop